

## Operation instructions

Dosing dispenser SPE ALU FLEX made of aluminium for disinfectants, liquid soaps and lotions, pump front removal

Suitable with 500 ml to 1 litre bottles and the 700 ml ESH Vacu-Bag.

### Note before installation:

Unpack the box and make sure that the following parts are included:

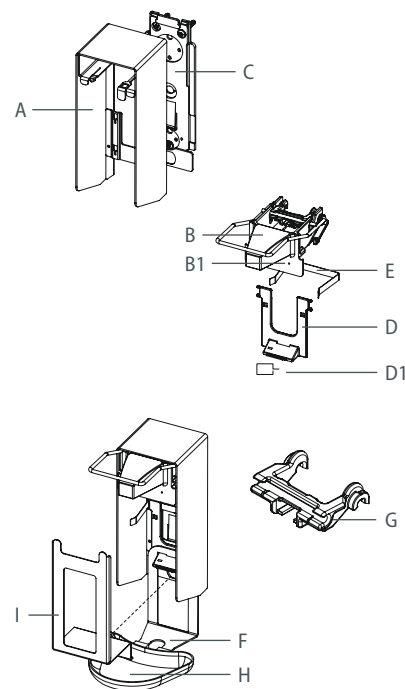
- 1 dispenser housing (aluminium)
- 1 pump cover (plastic) with arm lever (stainless stell)
- 1 wall mounting plate
- 1 bottle holder (plastic) incl. key (D1) for pump cover
- 1 bottle clamp (500 ml)
- 1 drip tray angle
- 1 ESH-adaptor for SPE ALU FLEX
- 1 drip tray
- 1 cover plate

In addition, either a disposable plastic pump or an adapter for inserting the ESH Vacu-Bags is required to operate the dispenser.

Wall dispensers and accessories	REF
<b>SPE ALU FLEX</b>	
Wall dispenser	00-907-KOMB
ESH adapter for SPE ALU FLEX	00-907-KOMB-01
Cover plate for SPE ALU FLEX	00-907-KOMB-02
Bottle clamp for 500 ml bottles	00-907-KOMB-03
Disposable plastic pump for SPE, 500ml	00-918-105
Disposable plastic pump for SPE, 1 L	00-918-110
Drip tray angle	00-907-KOMB-04
Drip tray white, universal	00-918-205
Drip tray green, washing lotion	00-918-205GR
Drip tray blue, hand disinfection	00-918-205BL
Drip tray yellow, skin care	00-918-205GE
Drip tray red, skin protection	00-918-205RO
drilling template	ZUB-907000

### Overview of the individual parts

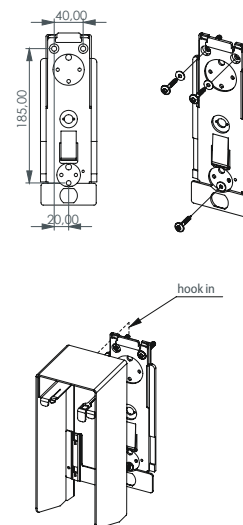
- A dispenser housing
- B pump cover with arm lever
- B1 key opening
- C wall mounting plate
- D bottle holder incl. Key (D1) for pump cover
- E bottle clamp (500 ml)
- F drip tray angle
- G ESH-adaptor for SPE ALU FLEX
- H drip tray
- I cover plate



### Notes on dispenser installation

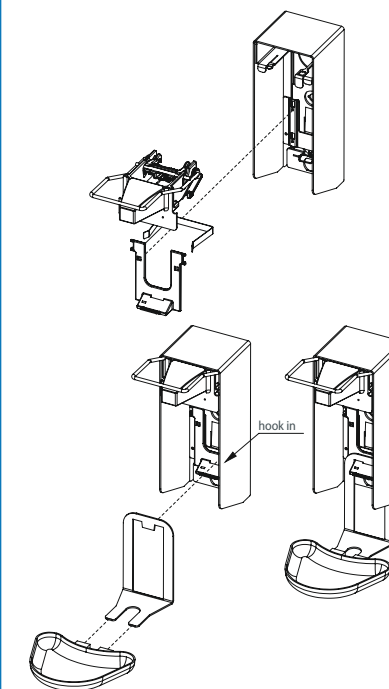
You will need a drill and a 6 mm drill bit as well as a screwdriver or cordless screwdriver. If required, a drilling template is available which specifies the necessary distances when using several dispensers with drip trays.

- Attach the wall mounting plate to the wall using dowels, washers and screws
- Height recommendation: The top edge of the dispenser should be approx. 130 cm above the floor
- Slide the dispenser over the wall mounting plate from above until the locking tongue audibly engages



### 1 Commissioning

The bottle holder is hooked into the upper holes for the 500 ml bottle and into the lower holes for the 700 ml and 1000 ml containers. Optionally, the bottle clamp can be clipped onto the bottle holder to stabilise the 500 ml bottle. This must be done before the bottle holder is hooked into the housing. Optionally, place the drip tray on the drip tray holder and hook it onto the bottle holder.

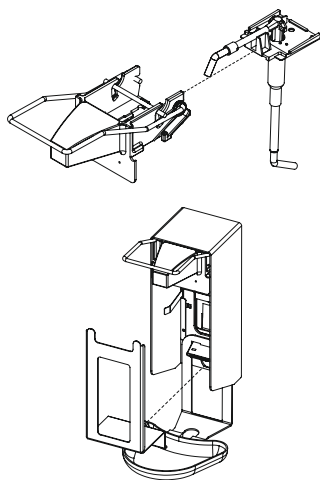


## Operation instructions

Dosing dispenser SPE ALU FLEX made of aluminium for disinfectants, liquid soaps and lotions, pump front removal

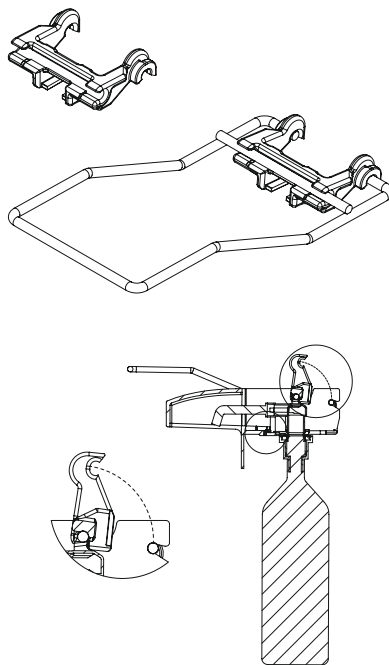
### ② Use of bottles and pumps: dosing – bottle replacement

Push the pump into the pump cover from behind under the lever until you hear it click into place. On delivery, the disposable plastic pump is set to the maximum dosing quantity of 1.8 ml per stroke. Please only pump with the maximum setting (dosing quantity 1.8 ml) when using viscous media! The quantity can be reduced to 1.2 ml or 0.8 ml per stroke by moving the dosing fork to the right or left. To replace the bottle or fill for the first time, open the cap, pull the empty bottle forwards and remove it, slide the new bottle over the riser tube of the dispenser pump from below and place it on the bottle stop. If necessary, close with the cover plate. (The cover plate can only be used for 500 ml bottles and 700 ml Vacu-Bag)



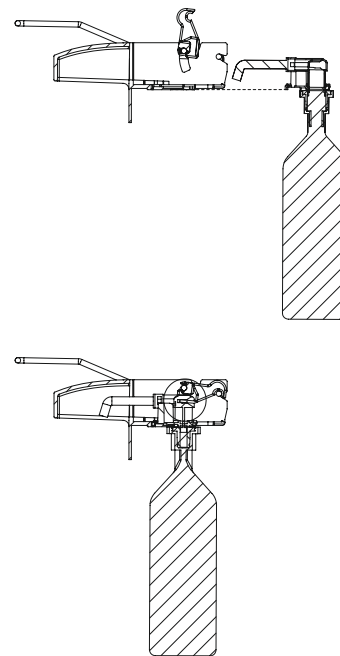
### ③ Use of ESH Vacu-Bags

Clip the wide side of the adapter onto the cross-bar of the lever from behind. Tilt the arms of the adapter upwards before inserting the Vacu-Bag. Insert the Vacu-Bag from behind under the lever into the pump cover. Make sure that the pump head is fully extended. Tilt the arms of the adapter down again, clip the pliers into the pump head, then push the pump cover into the upper drawer of the housing until you hear it click into place. If necessary, close with the optional cover plate.



### ④ ESH Vacu-Bag or pump replacement

Loosen the pump cover using the key. Press the key into the hole provided in the front right of the pump cover until the pump cover comes loose. Pull the pump cover out to the front. Remove the old pump or empty Vacu-Bag to the rear. In the case of the Vacu-Bag, the adapter must first be unlocked/tipped upwards. Insert the new pump or Vacu-Bag and push the pump cover back into the housing.



### ⑤ Pumping

Press the arm lever down several times as far as it will go until liquid comes out of the pump nozzle. When using viscous gels, soaps or lotions, press the lever firmly up to 10 times until the product solution comes out! In the event of problems, first suck in thin liquid (e.g. water), then thick liquid.

### ⑥ Cleaning

The dispenser should be cleaned and disinfected regularly in accordance with the recommendations for infection prevention and hygiene. To do this, only clean the housing with mild cleaning agents and, if necessary, treat with a surface disinfectant, e.g. DESCOSEPT SENSITIVE WIPES.

When using bottles and disposable pumps: For hygienic reasons, the dispenser pump is designed as a disposable pump, which should be replaced at regular intervals.