

Instruction

Operating instructions for manual dispenser preparation for elbow lever wall-mounted dispensers SPE 500/1000 and touchless

According to the Robert Koch Institute ("Hand hygiene" guidelines), inadequate dispenser hygiene, particularly associated with the use of washing lotions, can lead to bacterial contamination of dispenser systems and the product. The scope and frequency of cleaning and disinfection of a dosing dispenser housing and the dosing pump must be defined in the hospital's internal hygiene plans. We recommend the following processing intervals:

When using hand sanitizer:

- Complete dispenser preparation twice a year.

When using washing lotions:

- Complete dispenser preparation with each bottle change.

Preparation:

Gather the following materials:

- (lint-free) disposable wipes
- collection container with cold water
- disinfectant wipes (DESCOCEPT PUR WIPES RTU, DESCOCEPT SENSITIVE WIPES)

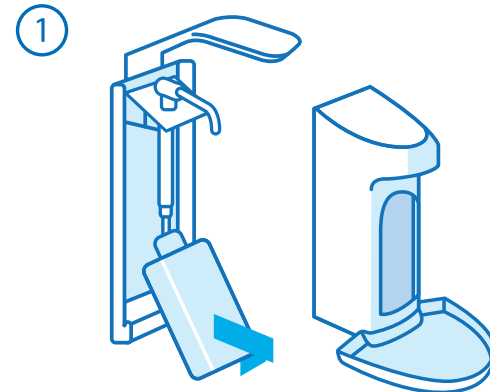
ATTENTION:

During dispenser preparation "personnel protection with potentially contaminated material". Therefore, for dispenser processing be sure to wear gloves.

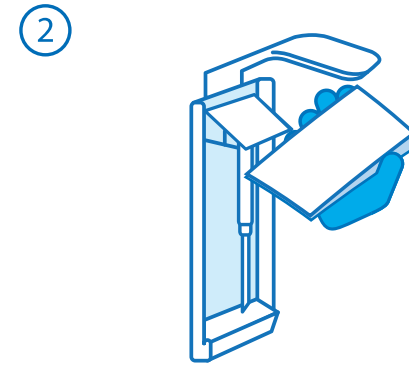
NOTE:

Manual dispenser preparation only applies to Dosing dispensers, which are used in the factory setting.

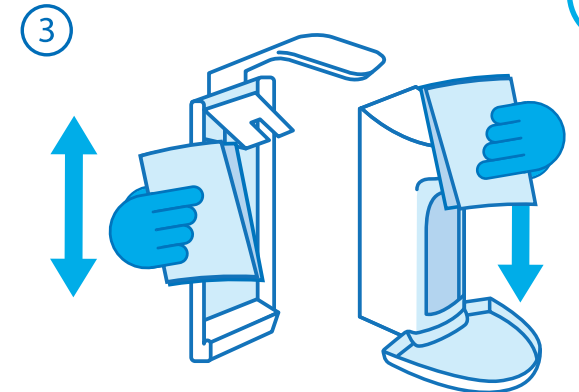
Use disinfectants safely. Always read label and product information before use.



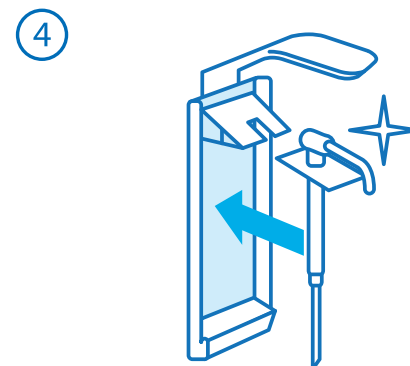
Remove the product bottle from the dispenser.



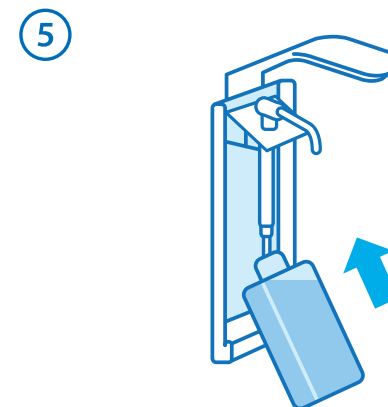
Hold a disposable wipe under the pump to prevent any residual product dripping while removing the pump. The disposable pump can be disposed of as normal waste.



Clean the dispenser housing and the back of the dispenser as well as all external surfaces with a dampened (lint-free) disposable cloth. Disinfect the surfaces with a rapid disinfectant, ensuring that the exposure time is adhered to (DESCOCEPT PUR WIPES RTU, DESCOCEPT SENSITIVE WIPES).



Then insert a new disposable pump and label with the date. It is recommended to replace the disposable pump about every 3 to 4 months.



Place a new product container in the dispenser and activate the pump dispenser 5 × to ensure an adequate dosing quantity.



During this step, hold a collection container under the opening of the dispenser. Any product collected in the collection container can be disposed of in the sewerage system.

