

Instruction

Filling of DESCO WIPES and ECO WIPES non-woven wipes dispenser

When using DESCO WIPES and ECO WIPES non-woven wipes dispenser systems for surface disinfection the basic hygienic standards are to be regarded. For filling of non-woven wipes dispenser and handling disinfectants observe the applicable rules for personnel protection and wear suitable protective equipment.

For application with ready to use disinfectants or prepared disinfectants according to manufacturer's guidelines.

A standing time of 28 days has been tested with the following Dr. Schumacher products:
CLEANISEPT, OPTISAL PLUS, OPTISAL N, BIGUANID FLÄCHE N, DESCOSEPT SENSITIVE, ULTRASOL OXY

Use disinfectants safely. Always read label and product information before use.

①



Remove dispenser cover and place it top down on a clean surface.

②



Take refill roll and place into the dispenser bucket.
Alternative: Place ready to use wipes into the bucket and proceed with step 4.

③

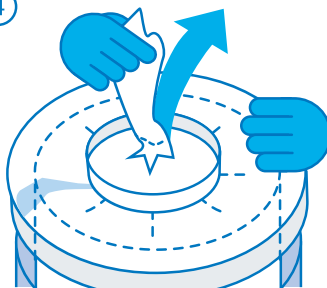


Slowly pour the disinfecting solution, in a spiral motion, onto the refill roll.

Dosing instructions

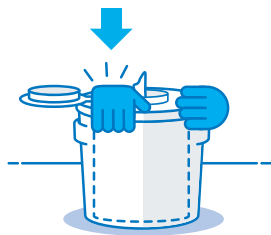
wipes/roll	50	70	100	120
working solution	1,5 L	1,5 L	3,0 L	2,5 L

④



Pull innermost wipe out and guide it through the star-shaped aperture of the dispensing element.

⑤



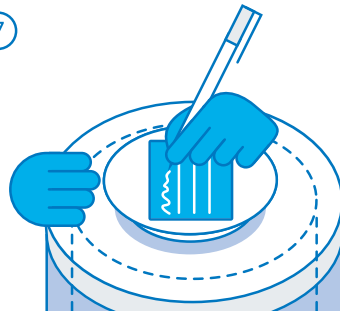
Close dispenser.

⑥



Ensure that the pulled out wipe is covered completely when closing the protective cap.

⑦



Fill out documentation fields on the label.

⑧



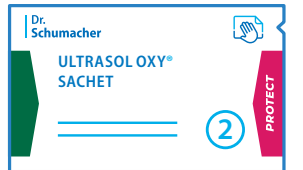
The system is ready for use after 30 minutes pre-soaking time. Attention: Discard the first wipe. Close dispenser after each use.

Reprocessing of DESCO WIPES and ECO WIPES

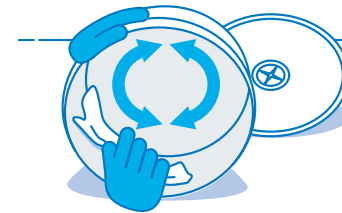
non-woven wipes dispenser by ULTRASOL OXY® reprocessing wipes



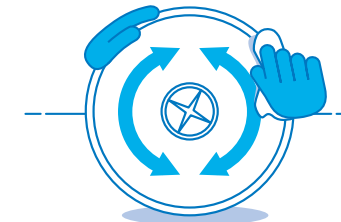
Each time the DESCO WIPES and ECO WIPES non-woven wipe dispenser is refilled, the system must undergo a preventive cleaning and disinfection. Along with possible chemical-thermal and thermal procedures, manual preparation using ULTRASOL OXY® reprocessing wipes is possible. ULTRASOL OXY® reprocessing wipes are provided with every refill package. It is recommended to inspect the non-woven wipes dispenser before reprocessing. Replace cover / dispenser when defects show. For filling of non-woven wipes dispensers and handling disinfectants observe the applicable rules for personnel protection and wear suitable protective equipment.



CLEANING ①



Thoroughly clean the insides and edge of the new or emptied dispenser with the cleaning wipe.



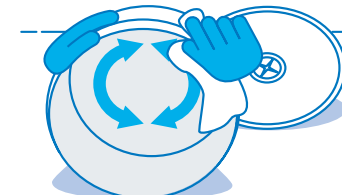
Thoroughly clean the insides of the cover, the edges of the cover, inside surfaces and the edges of the dispenser opening.



Thoroughly clean the outside of the cover and the outside surfaces of the dispenser.



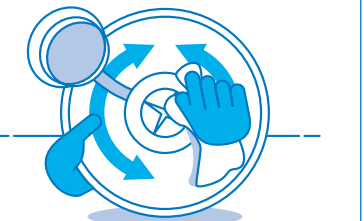
DESINCEKION ②



Thoroughly wipe the insides and edge of the new or emptied dispenser with the disinfection wipe.



Thoroughly wipe the insides of the cover, the edges of the cover, inside surfaces and the edges of the dispenser opening.



Thoroughly wipe the outside of the cover and the outside surfaces of the dispenser.

* Observe contact times

